

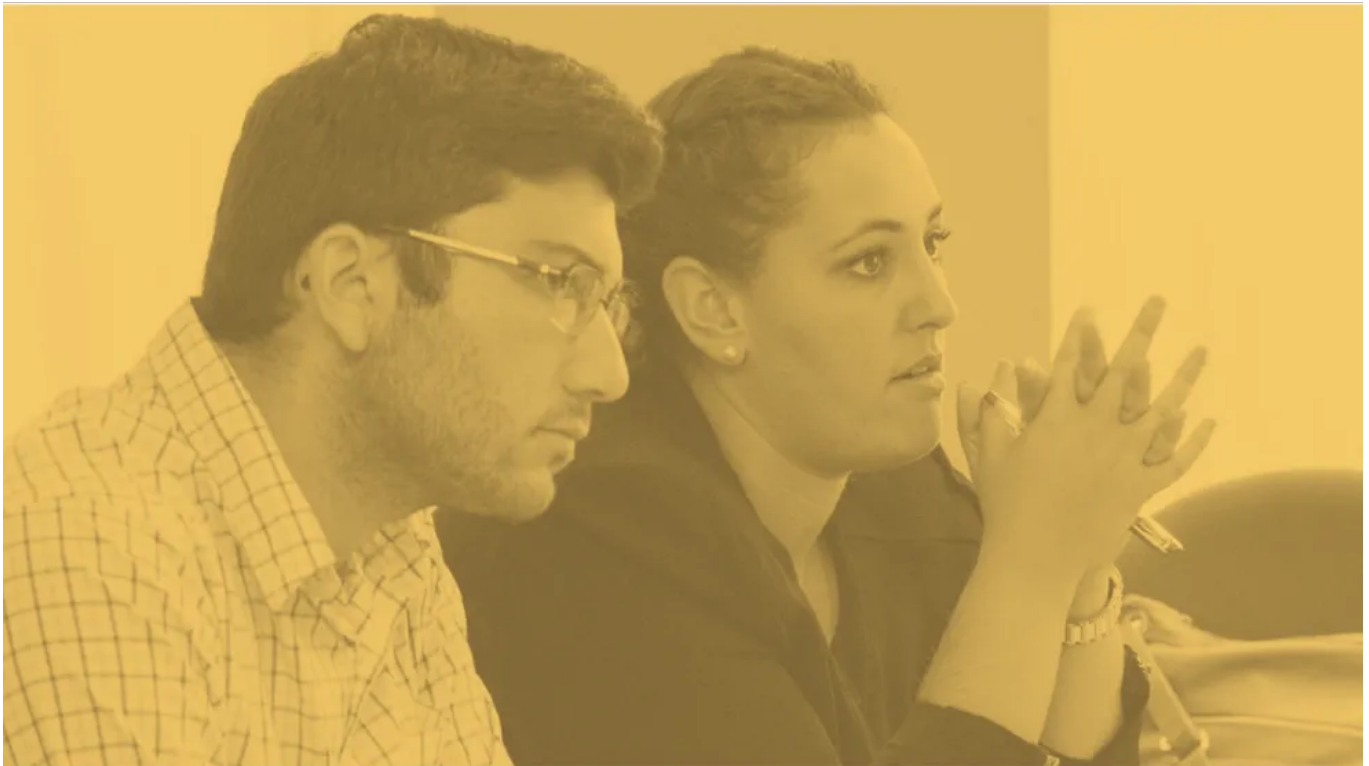


ADL CAMPUS

Think. Plan. Act.

Tools for Dealing with Antisemitic and Anti-Israel Incidents on Campus

A flyer posted in your dorm seems antisemitic. A campus event features an anti-Israel speaker. A fellow student says something about Jews that makes you feel uncomfortable. You may be concerned that you'll encounter challenging situations like these on your campus. If you do, the most important thing to remember is that you're not alone. Fellow students and campus professionals will stand with you—and ADL is on your side as well.



How Can I Be Prepared for Antisemitic and Anti-Israel Bias on Campus? Scenarios and Best Practices

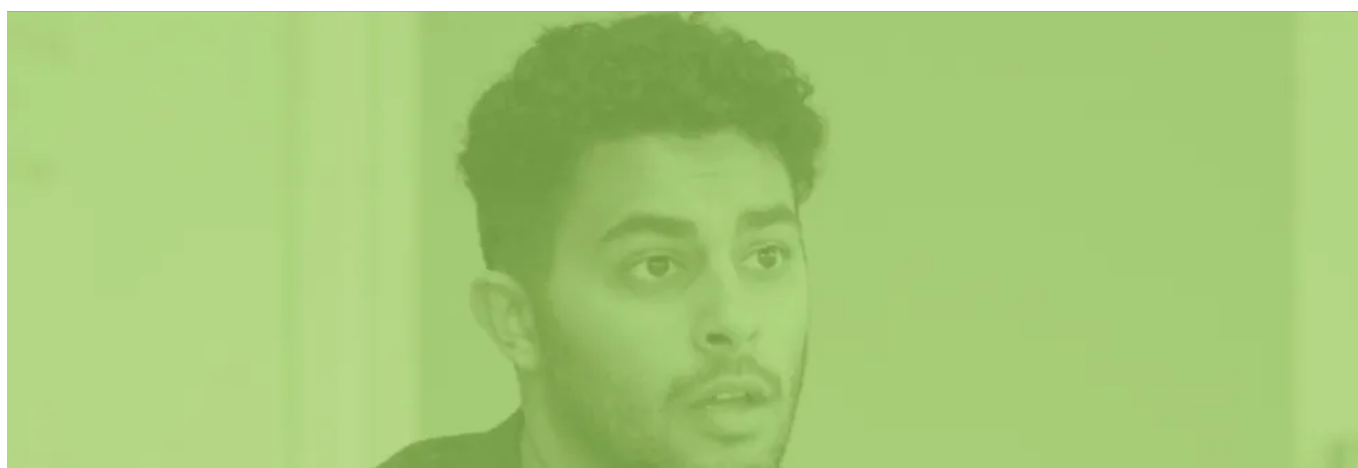
We've put together examples of real-life antisemitic or anti-Israel situations you might face that have already happened on American campuses. Get strategies on how to be prepared for these types of incidents.

[Learn More](#)

What Is... Antisemitism, Anti-Zionism, Anti-Israel Bias?

Definitions of these commonly used and commonly misunderstood terms.

[Learn More](#)





Frequently Asked Questions About Free Speech on Campus

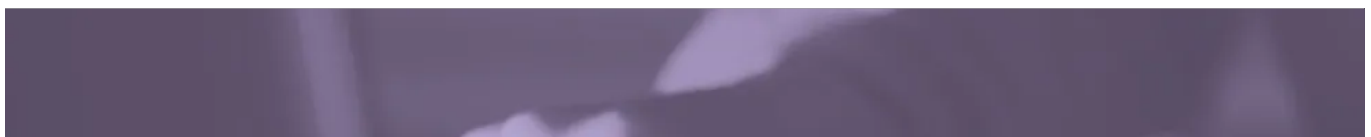
Questions about free speech on campus? Start here. This FAQ gives a basic overview of protected speech, freedom of expression and what might be different on public vs. private universities.

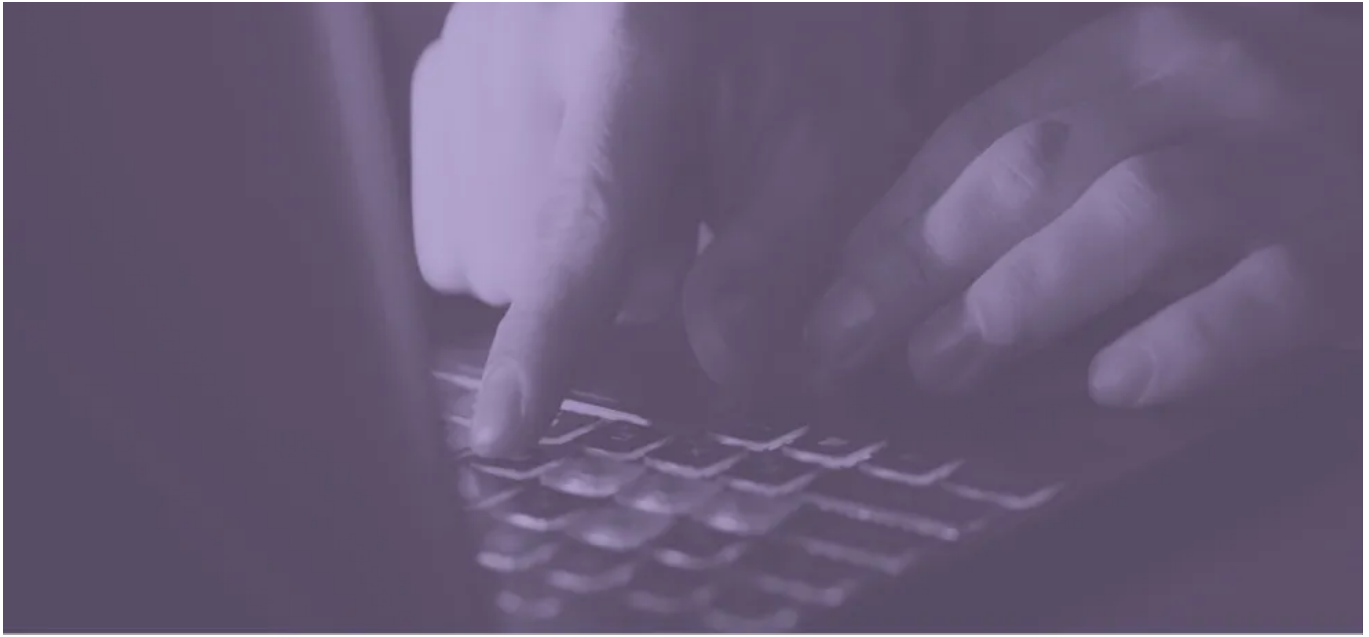
[Learn More](#)

Tips on Engaging and Disengaging on Social Media

Social media is a hotbed of antisemitism, anti-Israel hate, Holocaust denial and distortion and other conspiracy theories. Check out our tips on how to engage and disengage in the fight against antisemitism, anti-Israel bias and hate on social media.

[Learn More](#)





10 Ways to Have Conscientious Conversations on the Israeli-Palestinian Conflict

The Israeli-Palestinian conflict has always engendered strong emotions and differences of opinion. Learn tips on how to have conscientious discussion about this complex issue, and how to avoid common pitfalls that could invoke antisemitism, bias or bigotry.

[Learn More](#)

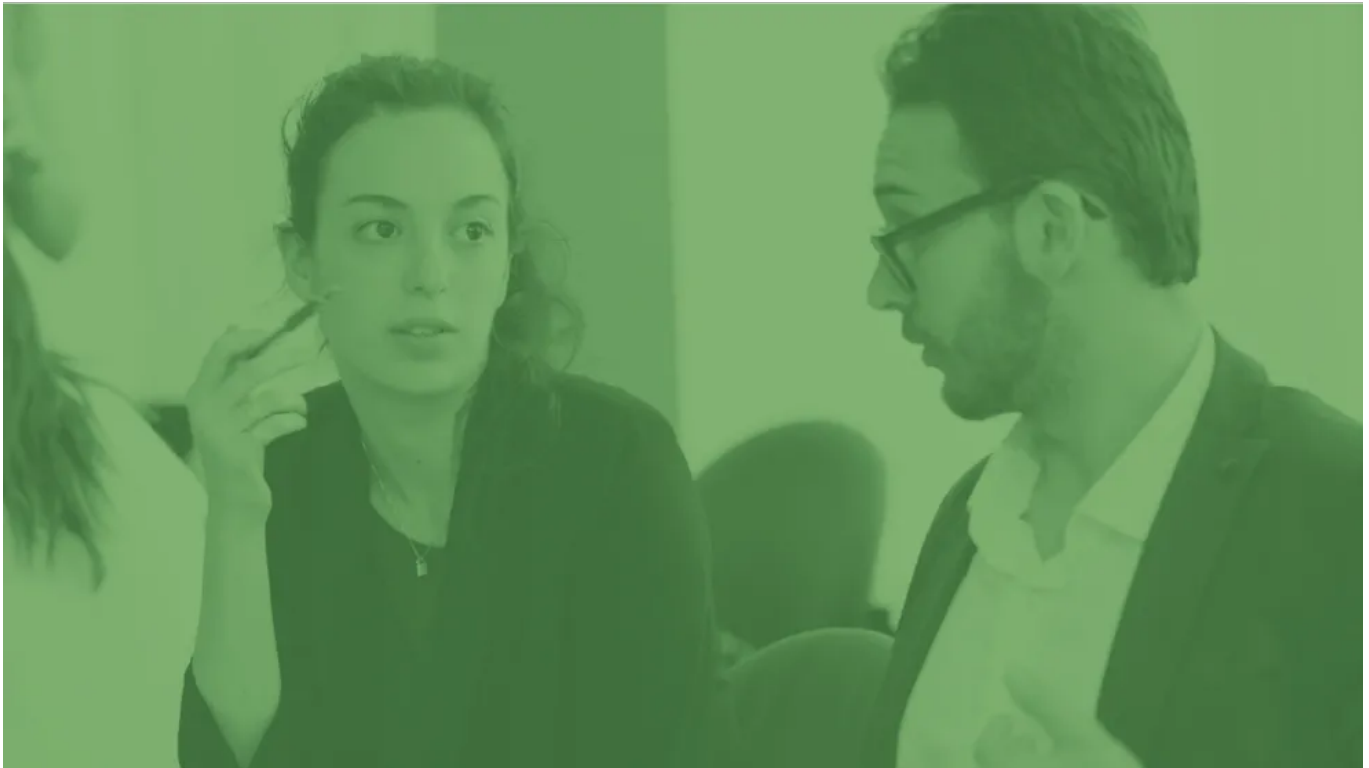
Dos and Don'ts in Responding to Antisemitism on Campus

If you or another Jewish student is targeted on your campus, you can be ready. Know who to turn to, what to do—and what not to do.

[Learn More](#)







Six Proactive Strategies to Deal with Anti-Israel Activity on Campus

There are proactive steps you can take to diminish the impact of anti-Israel activity taking place on your campus, and to be prepared if and when you do need to respond.

[Learn More](#)



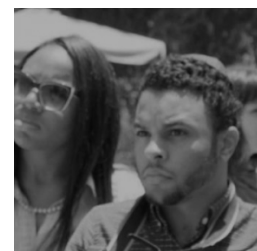
Report an Incident

Contact ADL for advice on responding to bias incidents.



Bring "Words to Action" to Your Campus

ADL's workshops can empower you and fellow students to counter antisemitism and anti-Israel bias.



Find an ADL Office Near You

Wherever you are, an ADL office is ready to help you at events on your campus.



Related Resources

- To report antisemitic and/or bias incidents targeting Jewish community members on North American college campuses please go to reportcampushate.org
- For information about antisemitic incidents that were reported in recent years, including on campus, please see [ADL's Audit of Antisemitic Incidents](#).
- [Anti-Israel Activism on U.S. Campuses, 2021-2022](#)
- [Words to Action: Empowering Students to Address Antisemitism](#) - Learn about ADL's interactive education program for middle school, high school, and college students.
- [Hate/Uncycled](#): a cross-campus program and framework for students, staff, faculty, administrators and campus safety teams to work together to understand

and challenge bias, work toward inclusive campus climate policies and practices, and to be prepared to respond effectively to hate incidents if they occur.