

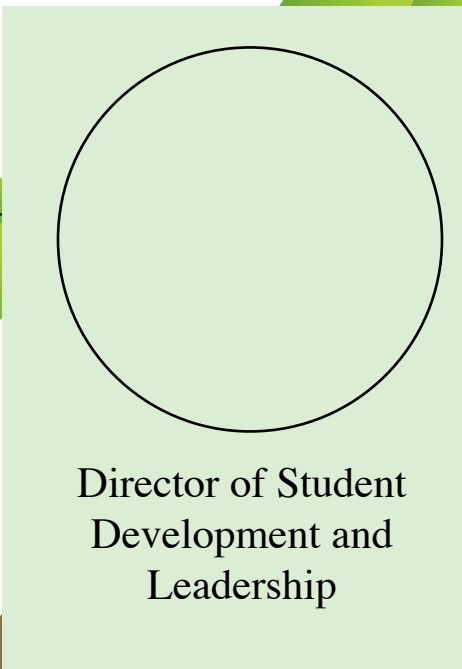
A.S. Staff 2017

A.S. President
Hieu Le

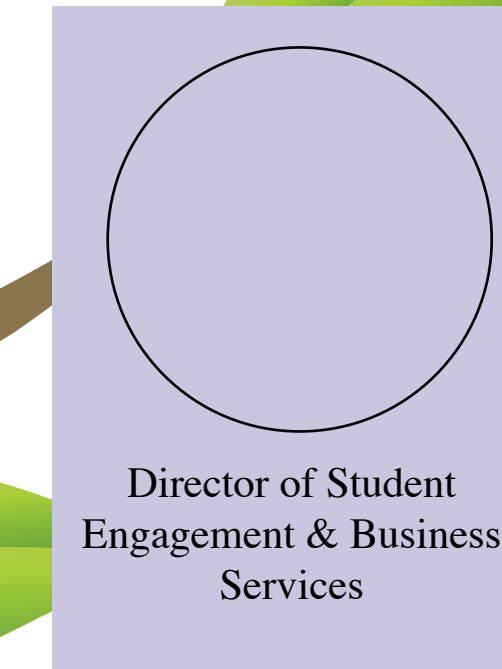
VC Student Affairs
Margaret Klawunn



Marisela Márquez
AS Executive Director



Director of Student
Development and
Leadership



Director of Student
Engagement & Business
Services



Ed Schatz
Director of Student Tech
Asst & Internal Operations



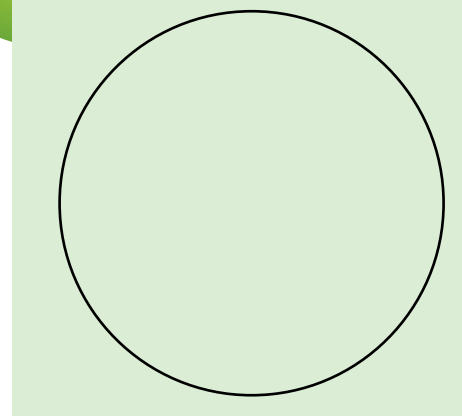
Aaron Jones
Assistant Director for
Community Affairs, Student
Engagement and Advocacy



LaDonte King
Assistant Director for
Government Affairs



Ruth Garcia Guevara
Comm Volunteer Coord



vacant
Student Government
Advisor



Sarah Siedschlag
Environmental
Programs Advisor



Diana Collins Puente
Isla Vista Community
Advisor



Allina Mojarro
Community Education
Outreach Coordinator



Jennifer Kiser
Assistant Director for
Independent Media



Eric Fredricey
KCSB Chief Engineer



Lisa Osborn
News & Public Affairs
Director



Ted Coe
KCSB Advisor



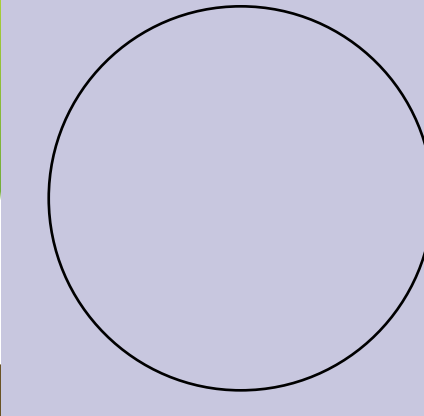
Leah Bartos
Journalism Advisor
& Living History Project



Marilyn Dukes
Assistant Director of Student
Programs, Events and Services



Paul Grankowski
Program Advisor



vacant
Legal Code & LRC
Caseworker



Mathew Norton
Assistant Director for
Business Services



Jessie Schmitt
Recycling and Compost
Coordinator



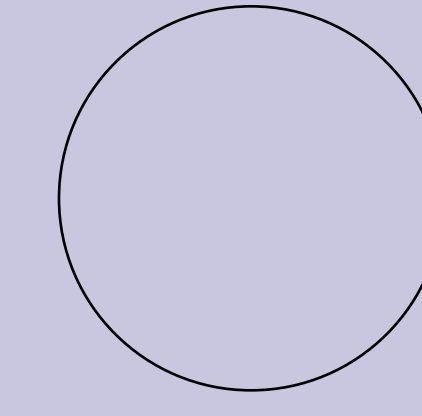
Rudolfo Herrera Ortiz
Food Bank Coordinator



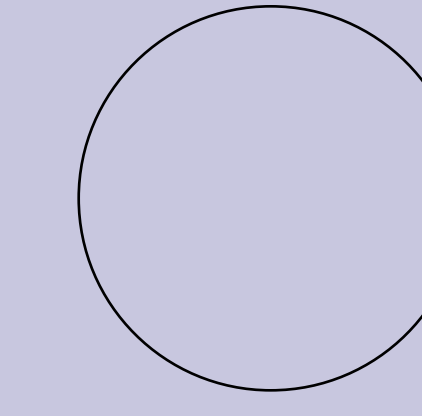
Kathleen Versola
Assistant Publications
Coordinator



Adam Jahnke
Bike Shop Coordinator



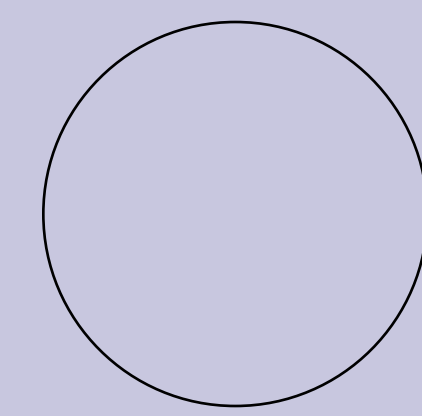
vacant
Bike Shop Assistant



vacant
Publications Analyst



Rayshaun Grimes
Cashier Coordinator



vacant
Box Office & Financial
Enterprises Specialist



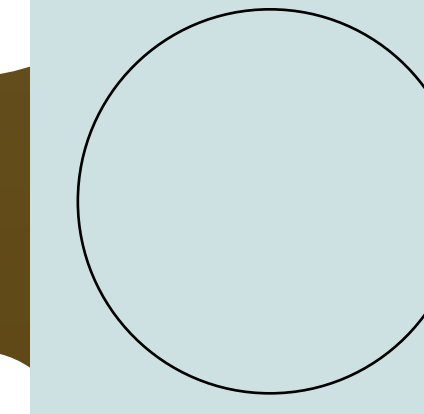
Cindy Lopez
Assistant Director for
Finance and Budgets



Gabriella Piazza
Administration Office
Coordinator



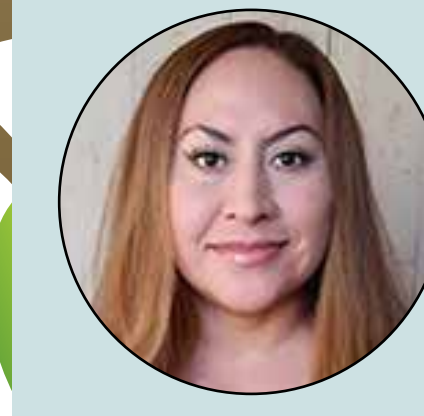
Irina Nikolaeva
Record Keeping
Specialist



vacant
Community Financial
Fund Coordinator



Sean Lieberman
Assistant Director for
Technology



Carmen Bautista
Computer Network
Technologist



JudyAnn Dutcher
Web Developer



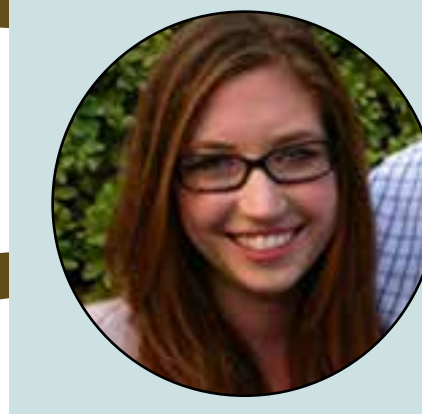
Denise Rinaldi
Asst. Dir. for HR &
External Comm.



Coraline Vereruyse
Human Resources &
Payroll Analyst



Andrew Doerr
Research Specialist



Chelsea Lyon
Art Director



Robin Unander
Indep Contractor
ASLC Attorney